

Makita®



2021

HAND TOOL RANGE

WRENCHES & PLIERS, SOCKETS,
SCREWDRIVERS, AND SNIPS

Contents

WRENCHES & PLIERS

B-65414	ADJUSTABLE WRENCH 150mm	4
B-65420	ADJUSTABLE WRENCH 200mm	4
B-65436	ADJUSTABLE WRENCH 250mm	4
B-65442	ADJUSTABLE WRENCH 300mm	4
B-65470	ADJUSTABLE WRENCH - LOCKING	5
B-65486	250mm WATER PUMP PLIERS	6
B-65492	300mm WATER PUMP PLIERS	6
B-65741	180mm BOX JOINT PLIERS	7
B-65757	240mm BOX JOINT PLIERS	7
B-65763	300mm BOX JOINT PLIERS	7
B-65894	HEX KEY WRENCH 9PC SET - METRIC	8
B-65523	DOUBLE RATCHET WRENCH 8PC SET - METRIC	9
B-65539	COMBINATION WRENCH 9PC SET - METRIC	10
E-11586	8mm COMBINATION WRENCH - METRIC	11
E-11592	10mm COMBINATION WRENCH - METRIC	11
E-11601	12mm COMBINATION WRENCH - METRIC	11
E-11617	13mm COMBINATION WRENCH - METRIC	11
E-11623	14mm COMBINATION WRENCH - METRIC	11
E-11639	15mm COMBINATION WRENCH - METRIC	11
E-11645	16mm COMBINATION WRENCH - METRIC	11
E-11651	17mm COMBINATION WRENCH - METRIC	11
E-11667	18mm COMBINATION WRENCH - METRIC	11
E-11673	19mm COMBINATION WRENCH - METRIC	11
B-65551	DOUBLE BOX WRENCH 5PC SET - METRIC	12
B-65545	FLARE NUT WRENCH 5PC SET - METRIC	13
B-65458	PASS THRU ADJUSTABLE WRENCH SET 11PC	14



SOCKETS

B-65595	PASS THRU SOCKET SET 14PC	15
B-65604	PASS THRU SOCKET SET 21PC	15
B-65610	PASS THRU HANDLE STRAIGHT	16
B-65626	LOCKING FLEX PASS THROUGH HANDLE	16
B-65844	1/4 SQUARE DRIVE SOCKET ADAPTER	17
B-65850	3/8 SQUARE DRIVE SOCKET ADAPTER	17
B-65632	PASS THROUGH EXTENSION BAR	17
B-65648	10mm PASS THRU SOCKET	18
B-65654	11mm PASS THRU SOCKET	18
B-65660	12mm PASS THRU SOCKET	18



SOCKETS

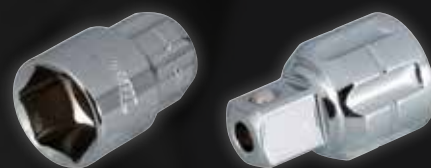
B-65676	13mm PASS THRU SOCKET	18
B-65682	14mm PASS THRU SOCKET	18
B-65698	15mm PASS THRU SOCKET	18
B-65707	16mm PASS THRU SOCKET	18
B-65713	17mm PASS THRU SOCKET	18
B-65729	18mm PASS THRU SOCKET	18
B-65735	19mm PASS THRU SOCKET	18
E-11558	1/4" SQUARE DRIVE RATCHET HANDLE	19
E-11564	3/8" SQUARE DRIVE RATCHET HANDLE	19
E-11570	1/2" SQUARE DRIVE RATCHET HANDLE	19

SCREWDRIVERS

B-66123	PH1 x 80mm INSULATED SCREWDRIVER	20
B-66139	PH2 x 100mm INSULATED SCREWDRIVER	20
B-66145	PH3 x 150mm INSULATED SCREWDRIVER	20
B-65903	PH1 x 100mm SCREWDRIVER	21
B-65919	PH2 x 100mm SCREWDRIVER	21
B-65931	PH3 x 150mm SCREWDRIVER	21
B-66064	PH1 x 75mm GO THROUGH SCREWDRIVER	22
B-66070	PH2 x 100mm GO THROUGH SCREWDRIVER	22
B-66086	PH3 x 150mm GO THROUGH SCREWDRIVER	22
B-66020	SL4 x 100mm SCREWDRIVER	23
B-66036	SL5.5 x 100mm SCREWDRIVER	23
B-66042	SL6.5 x 125mm SCREWDRIVER	23
B-66058	SL8 x 150mm SCREWDRIVER	23
B-65975	T10 x 100mm SCREWDRIVER	24
B-65981	T15 x 100mm SCREWDRIVER	24
B-65997	T20 x 100mm SCREWDRIVER	24
B-66008	T25 x 100mm SCREWDRIVER	24
B-66014	T30 x 100mm SCREWDRIVER	24

AVIATION SNIPS

B-65791	STRAIGHT CUT AVIATION SNIPS	25
B-65822	BULLDOG AVIATION SNIPS	25
B-65800	LEFT CUT AVIATION SNIPS	26
B-65816	RIGHT CUT AVIATION SNIPS	26



Adjustable Wrench

- 1 Wide capacity jaw allows each wrench to work with more fastener sizes
- 2 Hex jaw designed to reduces slippage as it grips the nut or bolt tighter
- 3 Wider handle provides more comfort and less stress to the hand
- 4 Laser etched scale in both SAE/Metric



Maximum jaw width at least 10mm wider than standard wrenches of the same size



Laser etched SAE scale (shown) and Metric scale etched on other side



B-65414



B-65420



B-65436



B-65442

Part Number	Description	Package Dimensions L x W x D (mm)	Weight (kg)	Barcode
B-65414	ADJUSTABLE WRENCH 150mm	240 x 90 x 16	0.19	0088381537353
B-65420	ADJUSTABLE WRENCH 200mm	290 x 100 x 16	0.32	0088381537360
B-65436	ADJUSTABLE WRENCH 250mm	340 x 115 x 16	0.60	0088381537377
B-65442	ADJUSTABLE WRENCH 300mm	390 x 130 x 16	0.73	0088381537384

Adjustable Wrench - Locking

- 1 Adjustable jaw with grooved teeth for added grip
- 2 Laser etched scale in both SAE/Metric
- 3 Comfortable grip which delivers 2 times the gripping power on rounded fasteners
- 4 Max Jaw Capacity 35mm



Laser etched SAE scale (shown) and Metric scale etched on other side



Improved gripping power allows for tightening and loosening of rounded fasteners



Part Number	Description	Package Dimensions L x W x D (mm)	Weight (kg)	Barcode
B-65470	ADJUSTABLE WRENCH - LOCKING	317 x 112 x 23	0.65	0088381537414

Water Pump Pliers

- ❶ Specially designed "V" shaped jaws and induction hardened teeth allow for firmer grip
- ❷ Integrated non-marring pipe grip prevent damaging object surface finish
- ❸ Exposed steel handle tips designed to prevent handle pull-off and allow for reaming and tightening tub drains



Improved "V" shaped jaws and hardened teeth provide a tighter grip for both hex nuts and pipes



Conveniently ream PVC pipes using the steel handle tips



B-65486



B-65492



Cylindrical grip integrated into handle that protects the object surface

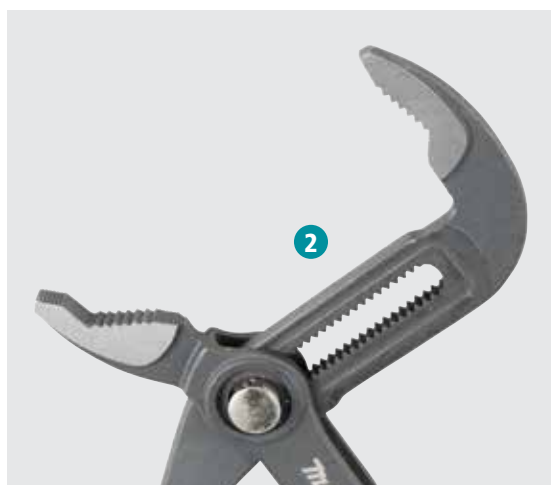


Steel handle tips able to easily pry open paint can lids

Part Number	Description	Package Dimensions L x W x D (mm)	Weight (kg)	Barcode
B-65486	250mm WATER PUMP PLIERS	323 x 107 x 27	0.47	0088381537421
B-65492	300mm WATER PUMP PLIERS	373 x 135 x 28	0.67	0088381537438

Box Joint Pliers

- ❶ Easy adjustment with the push of a button
- ❷ 24 positions of fine adjustment for optimum adaptation
- ❸ Box-joint design for high stability
- ❹ Shape of gripping designed to improve contact and reduce slipping



24 positions of fine adjustment for optimum adaptation



Box-joint design for high stability



B-65741

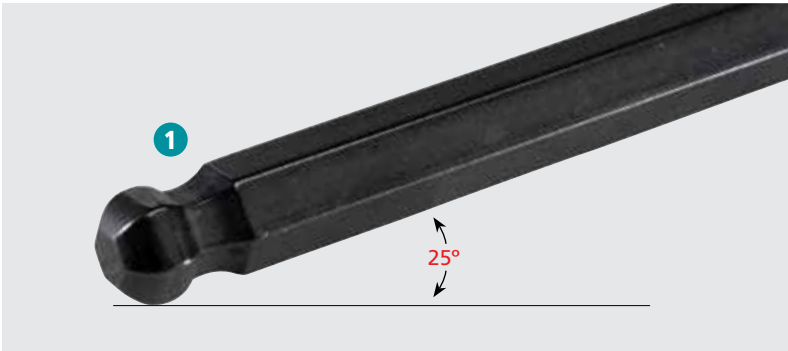
B-65757

B-65763

Part Number	Description	Package Dimensions L x W x D (mm)	Weight (kg)	Barcode
B-65741	180mm BOX JOINT PLIERS	260 x 75 x 25	0.22	0088381537681
B-65757	240mm BOX JOINT PLIERS	320 x 90 x 25	0.38	0088381537698
B-65763	300mm BOX JOINT PLIERS	380 x 100 x 25	0.58	0088381537704

Hex Key Wrench 9pc Set - Metric

- 1 Hex Keys with ball point ends for fastening in confined spaces at a max 25° angle
- 2 Belt clip for convenience



- | |
|------|
| 1.5 |
| 2.0 |
| 2.5 |
| 3.0 |
| 4.0 |
| 5.0 |
| 6.0 |
| 8.0 |
| 10.0 |



Teal holder section able to be opened for easy access to hex key wrench sizes 1.5 to 5



Ball point end allows fastening of hex heads at difficult angles

Part Number	Description	Package Dimensions L x W x D (mm)	Weight (kg)	Barcode
B-65894	HEX KEY WRENCH 9PC SET - METRIC	290 x 110 x 25	0.9	0088381537834

Double Ratchet Wrench 8pc Set - Metric

- 1 Open-end wrench with spring loaded pin allows for fast ratcheting function
- 2 12 Point ratcheting function at Box End
- 3 72 teeth gear ratchet in box end and 5° ratcheting arc



(Set Contains: 8, 10, 12, 13, 14, 15, 17, 19mm)



5° ratcheting arc allows easier fastening in confined spaces



Ratcheting function on open end wrench for quick and easy fastening



RATCHET
WRENCH

STANDARD
WRENCH

Open end wrench features an improved shape for better grip on hex nuts and added spring loaded pin for ratcheting function

Part Number	Description	Package Dimensions L x W x D (mm)	Weight (kg)	Barcode
B-65523	DOUBLE RATCHET WRENCH 8PC SET - METRIC	282 x 187 x 43	0.96	0088381537469

Combination Wrench 9pc Set - Metric

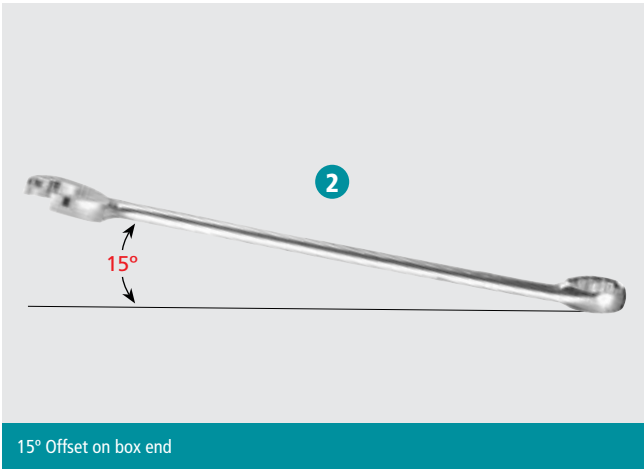
- 1 Provides a stronger grip on fasteners reducing fastening time
- 2 Box End 15° offset providing knuckle clearance
- 3 12 points of contact for stronger grip reducing slip rate



(Set Contains: 8, 10, 12, 13, 14, 15, 16, 17, 18mm)



Grooves in the wrench profile improve grip on fasteners



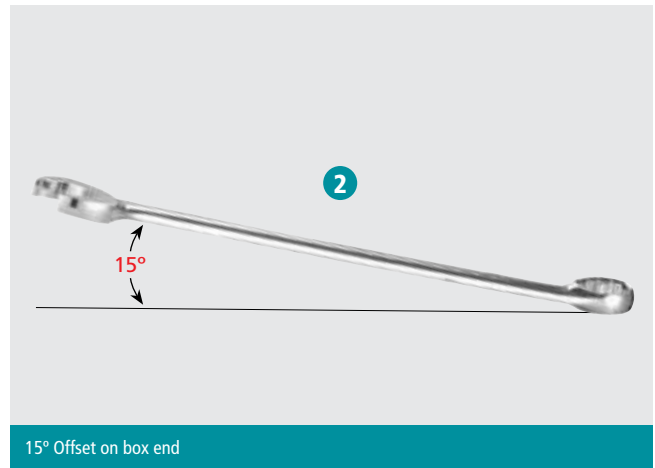
15° Offset on box end



Part Number	Description	Package Dimensions L x W x D (mm)	Weight (kg)	Barcode
B-65539	COMBINATION WRENCH 9PC SET - METRIC	279 x 238 x 36	1.20	0088381537476

Combination Wrench - Metric

- ❶ Provides a stronger grip on fasteners reducing fastening time
- ❷ Box End 15° offset providing knuckle clearance
- ❸ 12 points of contact for stronger grip reducing slip rate



Part Number	Description	Package Dimensions L x W x D (mm)	Weight (kg)	Barcode
E-11586	8mm COMBINATION WRENCH - METRIC	160 x 50 x 10	0.05	0088381583749
E-11592	10mm COMBINATION WRENCH - METRIC	170 x 50 x 10	0.07	0088381583756
E-11601	12mm COMBINATION WRENCH - METRIC	200 x 50 x 10	0.09	0088381583763
E-11617	13mm COMBINATION WRENCH - METRIC	210 x 50 x 10	0.09	0088381583770
E-11623	14mm COMBINATION WRENCH - METRIC	230 x 50 x 10	0.12	0088381583787
E-11639	15mm COMBINATION WRENCH - METRIC	230 x 50 x 10	0.14	0088381583794
E-11645	16mm COMBINATION WRENCH - METRIC	240 x 50 x 10	0.15	0088381583800
E-11651	17mm COMBINATION WRENCH - METRIC	260 x 50 x 10	0.19	0088381583817
E-11667	18mm COMBINATION WRENCH - METRIC	270 x 50 x 10	0.20	0088381583824
E-11673	19mm COMBINATION WRENCH - METRIC	280 x 50 x 10	0.24	0088381583831

Double Box Wrench 5pc Set - Metric

- ① 75° Offset ends allow you to work in tight spaces and offer comfortable hand clearance
- ② Two different box-end sizes which allows more user options
- ③ 12 points of contact for stronger grip reducing slip rate
- ④ Made of drop forged alloy steel for durability and full polish nickel chrome plated for long tool life and easy cleaning



(Set Contains: 8-9, 10-11, 12-13, 14-15, 18-19mm)



75° offset on both ends allow easier fastening of nuts in confined spaces



Increased area of contact points improve grip and reduces fastener wear



Part Number	Description	Package Dimensions L x W x D (mm)	Weight (kg)	Barcode
B-65551	DOUBLE BOX WRENCH 5PC SET - METRIC	270 x 80 x 35	2.05	0088381537490

Flare Nut Wrench 5pc Set - Metric

- ① Offset Box ends distribute turning force throughout the entire fastener head for a solid hold
- ② Made of drop forged alloy steel for durability and full polish nickel chrome plated for long tool life and easy cleaning
- ③ Two different sized heads allows for more use options with a single wrench
- ④ Large contact surface with fastener reduces rounding



(Set Contains: 9-11, 10-12, 13-14, 15-17, 16-18mm)



Suitable for aluminium, copper and brass hexagonal fittings on oil pipe



Part Number	Description	Package Dimensions L x W x D (mm)	Weight (kg)	Barcode
B-65545	FLARE NUT WRENCH 5PC SET - METRIC	193 x 70 x 35	0.76	0088381537483

Pass Thru Adjustable Wrench Set 11pc

- 1 Sockets work on 6-point, 12-point, square, E-T, spline and partially rounded hex fasteners
- 2 Universal sockets fit both SAE and metric fasteners
- 3 Pass-thru socket/wrench system works over long threaded rod
- 4 Laser etched scaled (SAE/MM) for quick and easy adjustments of fastener size
- 5 Double Sided Jaw able to be used for both flat and rounded surfaces/fasteners



Socket Sizes

19mm
3/4"

18mm
23/32"

17mm
11/16"

16mm
5/8"

15mm
19/32"

14mm
9/16"

13mm
1/2"

12mm
15/32"

11mm
7/16"

10mm
3/8"



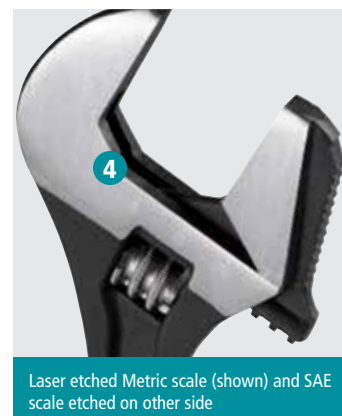
Socket shape allows compatibility with various types of fasteners



Both SAE and Metric sizes shown on each socket



Ratcheting function on the end of wrench



Laser etched Metric scale (shown) and SAE scale etched on other side



Flip the jaw to switch between uses for gripping flat or rounded surfaces

Part Number	Description	Package Dimensions L x W x D (mm)	Weight (kg)	Barcode
B-65458	PASS THRU ADJUSTABLE WRENCH SET 11PC	330 x 102 x 40	0.90	0088381537391

Pass Thru Socket Set

- 1 Pass thru ratchet & socket system allows for fastening nuts on threaded rods
- 2 Sockets and ratchet handle thinner and lighter than conventional systems
- Angled entry guides the socket on to the fastener
- Stronger grip on fasteners which reduces fastener rounding



14 PIECE SET

Set Contains:

Pass Thru Sockets: 10, 11, 12, 13, 14, 15, 16, 17, 18, 19mm

Socket Adaptor: 1/4", 3/8"

Pass Thru Extension Bar (75mm)

Pass Thru Handle Straight



21 PIECE SET

Set Contains:

Pass Thru Sockets: 10, 11, 12, 13, 14, 15, 16, 17, 18, 19mm

Pass Thru Sockets: 3/8", 7/16", 1/2", 9/16", 5/8", 11/16", 3/4"

Socket Adaptor: 1/4", 3/8"

Pass Thru Extension Bar (75mm)

Pass Thru Handle Straight



MAKITA PASS
THRU SOCKET



STANDARD
SOCKET

Thinner and lighter compared to standard sockets



Set includes 1/4" and 3/8" square drive socket adaptors and extension bar

Part Number	Description	Package Dimensions L x W x D (mm)	Weight (kg)	Barcode
B-65595	PASS THRU SOCKET SET 14PC	310 x 144 x 47	1.25	0088381537537
B-65604	PASS THRU SOCKET SET 21PC	310 x 144 x 47	1.40	0088381537544

Pass Thru Handle Straight

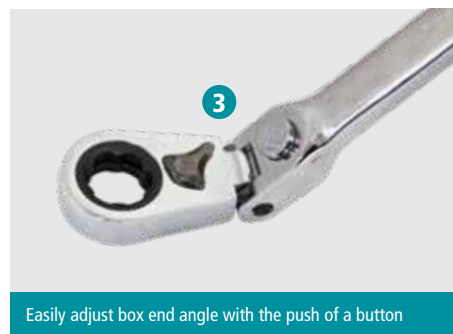
- ① Pass thru ratchet & socket system allows for fastening nuts on threaded rods
- ② 25% thinner than conventional systems
- ③ 72 teeth gear ratchet and 5° ratcheting arc



Part Number	Description	Package Dimensions L x W x D (mm)	Weight (kg)	Barcode
B-65610	PASS THRU HANDLE STRAIGHT	313 x 75 x 22	0.27	0088381537551

Locking Flex Pass Thru Handle

- ① Pass thru ratchet & socket system allows for fastening nuts on threaded rods
- ② 25% thinner than conventional systems
- ③ One touch adjustable box end angle. 11 locking positions (-90° to 90°)
- ④ 72 teeth gear ratchet and 5° ratcheting arc
- ⑤ Adjustable neck angle function allow users to work in deep spaces



Easily adjust box end angle with the push of a button

Part Number	Description	Package Dimensions L x W x D (mm)	Weight (kg)	Barcode
B-65626	LOCKING FLEX PASS THRU HANDLE	34 x 75 x 32	0.43	0088381537568

Square Drive Socket Adaptor

- 1 Allows for Pass-Thru Ratchet to be used with standard square drive sockets



B-65844



B-65850

Part Number	Description	Package Dimensions L x W x D (mm)	Weight (kg)	Barcode
B-65844	1/4 SQUARE DRIVE SOCKET ADAPTER	135 x 75 x 32	0.04	0088381537780
B-65850	3/8 SQUARE DRIVE SOCKET ADAPTER	135 x 75 x 32	0.05	0088381537797

Pass Through Extension Bar

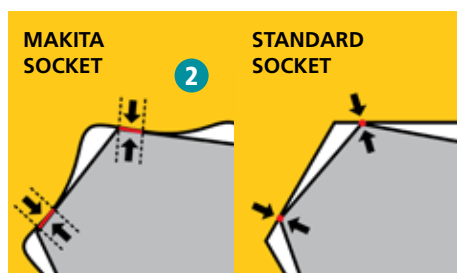
- 1 Allows you to fasten bolts or nuts in deep or tight spaces.



Part Number	Description	Package Dimensions L x W x D (mm)	Weight (kg)	Barcode
B-65632	PASS THROUGH EXTENSION BAR	190 x 75 x 32	0.95	0088381537575

Pass Thru Socket

- ① Pass thru socket system allows for fastening nuts on threaded rods
- ② Stronger grip on fasteners which reduces fastener rounding
- ③ 30% thinner surrounding makes socket lighter and more durable
- ④ Angled entry guides the socket on to the fastener
- Large hard-stamped size on both sides for fast and easy identification



Socket profile allows for greater area of contact with fastener compared to standard sockets

MAKITA PASS
THRU SOCKET



STANDARD
SOCKET



Thinner and lighter compared to standard sockets



Part Number	Description	Package Dimensions L x W x D (mm)	Weight (kg)	Barcode
B-65648	10mm PASS THRU SOCKET	135 x 75 x 32	0.04	0088381537582
B-65654	11mm PASS THRU SOCKET	135 x 75 x 32	0.04	0088381537599
B-65660	12mm PASS THRU SOCKET	135 x 75 x 32	0.04	0088381537605
B-65676	13mm PASS THRU SOCKET	135 x 75 x 32	0.04	0088381537612
B-65682	14mm PASS THRU SOCKET	135 x 75 x 32	0.04	0088381537629
B-65698	15mm PASS THRU SOCKET	135 x 75 x 32	0.04	0088381537636
B-65707	16mm PASS THRU SOCKET	135 x 75 x 32	0.04	0088381537643
B-65713	17mm PASS THRU SOCKET	135 x 75 x 32	0.04	0088381537650
B-65729	18mm PASS THRU SOCKET	135 x 75 x 32	0.04	0088381537667
B-65735	19mm PASS THRU SOCKET	135 x 75 x 32	0.05	0088381537674

Square Drive Ratchet Handle

- ① 84 teeth gear ratchet and 4.3° ratcheting arc
- ② Thinner than conventional ratchets
- ③ Attach / Detach sockets with the push of a button
- ④ Internal structure has higher durability due to larger contact area with the gear



E-11558

E-11564

E-11570



Enclosed head design provides superior protection of the internal ratchet structure against dirt infiltration



Part Number	Description	Package Dimensions L x W x D (mm)	Weight (kg)	Barcode
E-11558	1/4" SQUARE DRIVE RATCHET HANDLE	210 x 50 x 20	0.13	0088381583718
E-11564	3/8" SQUARE DRIVE RATCHET HANDLE	280 x 50 x 30	0.29	0088381583725
E-11570	1/2" SQUARE DRIVE RATCHET HANDLE	330 x 70 x 30	0.63	0088381583732

Phillips Insulated Screwdrivers

- 1 1000V insulated driver and double insulated surface - For added protection
- 2 Ergonomic handle for comfort, made from anti-slip and oil resistant dual material
- 3 Tapered screwdriver tip
- 4 VDE certified - Can be used with electrical material



B-66123

B-66139

B-66145



Screwdriver head type and working length indicated on the end of the handle

Part Number	Description	Package Dimensions L x W x D (mm)	Weight (kg)	Barcode
B-66123	PH1 x 80mm INSULATED SCREWDRIVER	250 x 42 x 35	0.07	0088381538060
B-66139	PH2 x 100mm INSULATED SCREWDRIVER	270 x 42 x 38	0.10	0088381538077
B-66145	PH3 x 150mm INSULATED SCREWDRIVER	330 x 42 x 40	0.17	0088381538084

Phillips Screwdrivers

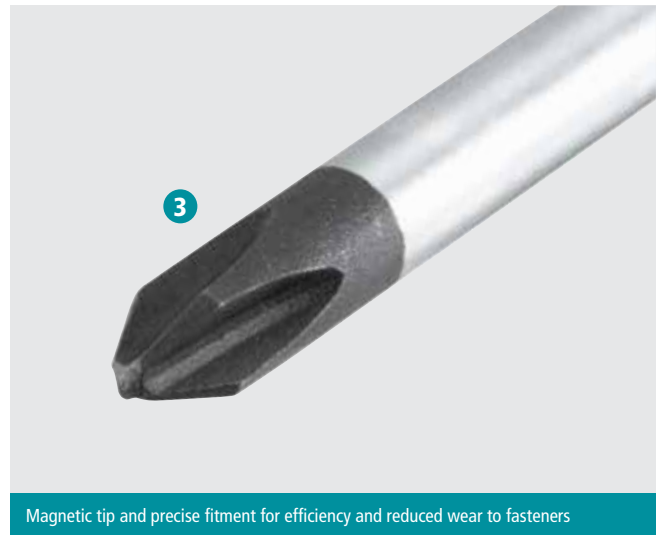
- 1 Ergonomic handle for comfort, made from anti-slip and oil resistant dual material
- 2 Precise size and Cr-V steel result in high torque strength and longer life
- 3 Black magnetic tip for greater fastener control and guarantees exact fitment



B-65903

B-65919

B-65931



Magnetic tip and precise fitment for efficiency and reduced wear to fasteners



Screwdriver head type and working length indicated on the end of the handle

Part Number	Description	Package Dimensions L x W x D (mm)	Weight (kg)	Barcode
B-65903	PH1 x 100mm SCREWDRIVER	260 x 42 x 35	0.07	0088381537841
B-65919	PH2 x 100mm SCREWDRIVER	270 x 42 x 38	0.10	0088381537858
B-65931	PH3 x 150mm SCREWDRIVER	330 x 42 x 40	0.16	0088381537872

Phillips Go Through Screwdrivers

- ① Black magnetic tip for greater fastener control and guarantees exact fitment
- ② Precise size and Cr-V steel result in high torque strength and longer life
- ③ Ergonomic handle for comfort, made from anti-slip and oil resistant dual material
- ④ Hex shaft which increases leverage and extra torque. Can fit any wrench to easily loosen tight.
- ⑤ "Go-Through" construction provides greater striking force than traditional cap ends



B-66064

B-66070

B-66086



Part Number	Description	Package Dimensions L x W x D (mm)	Weight (kg)	Barcode
B-66064	PH1 x 75mm GO THROUGH SCREWDRIVER	240 x 42 x 35	0.19	0088381537353
B-66070	PH2 x 100mm GO THROUGH SCREWDRIVER	270 x 42 x 38	0.32	0088381537360
B-66086	PH3 x 150mm GO THROUGH SCREWDRIVER	330 x 42 x 40	0.60	0088381537377

Slotted Screwdrivers

- 1 Ergonomic handle for comfort, made from anti-slip and oil resistant dual material
- 2 Precise size and Cr-V steel result in high torque strength and longer life
- 3 Black magnetic tip for greater fastener control and guarantees exact fitment



B-66020

B-66036

B-66042

B-66058



Magnetic tip and precise fitment for efficiency and reduced wear to fasteners



Screwdriver head type and working length indicated on the end of the handle

Part Number	Description	Package Dimensions L x W x D (mm)	Weight (kg)	Barcode
B-66020	SL4 x 100mm SCREWDRIVER	240 x 42 x 33	0.07	0088381537964
B-66036	SL5.5 x 100mm SCREWDRIVER	260 x 42 x 35	0.07	0088381537971
B-66042	SL6.5 x 125mm SCREWDRIVER	270 x 42 x 38	0.10	0088381537988
B-66058	SL8 x 150mm SCREWDRIVER	330 x 42 x 40	0.16	0088381537995

Torx Screwdrivers

- 1 Ergonomic handle for comfort, made from anti-slip and oil resistant dual material
- 2 Precise size and Cr-V steel result in high torque strength and longer life
- 3 Black magnetic tip for greater fastener control and guarantees exact fitment



Magnetic tip and precise fitment for efficiency and reduced wear to fasteners



Screwdriver head type and working length indicated on the end of the handle

Part Number	Description	Package Dimensions L x W x D (mm)	Weight (kg)	Barcode
B-65975	T10 x 100mm SCREWDRIVER	260 x 42 x 36	0.07	0088381537919
B-65981	T15 x 100mm SCREWDRIVER	260 x 42 x 36	0.07	0088381537926
B-65997	T20 x 100mm SCREWDRIVER	260 x 42 x 36	0.07	0088381537933
B-66008	T25 x 100mm SCREWDRIVER	275 x 42 x 38	0.10	0088381537940
B-66014	T30 x 100mm SCREWDRIVER	275 x 42 x 38	0.10	0088381537957

Straight Cut Aviation Snips

- ❶ Chrome-Molybdenum Alloy steel forged blades for strength and durability
- ❷ Centre fastener for high tensile strength and longer life
- ❸ Non-slip dual material handle for comfort grip
- ❹ Serrated edges for stable bite and prevents slipping
- ❺ Spring-free auto latch design for one hand operation providing safety and convenience



Part Number	Description	Package Dimensions L x W x D (mm)	Weight (kg)	Barcode
B-65791	STRAIGHT CUT AVIATION SNIPS	310 x 107 x 26	0.46	0088381537735

Bulldog Aviation Snips

- ❶ Chrome-Molybdenum Alloy steel forged blades for strength and durability
- ❷ Centre fastener for high tensile strength and longer life
- ❸ Non-slip dual material handle for comfort grip
- ❹ Serrated edges for stable bite and prevents slipping
- ❺ Spring-free auto latch design for one hand operation providing safety and convenience



Part Number	Description	Package Dimensions L x W x D (mm)	Weight (kg)	Barcode
B-65822	BULLDOG AVIATION SNIPS	310 x 107 x 26	0.41	0088381537766

Left Cut Aviation Snips

- 1 Chrome-Molybdenum Alloy steel forged blades for strength and durability
- 2 Centre fastener for high tensile strength and longer life
- 3 Non-slip dual material handle for comfort grip
- 4 Serrated edges for stable bite and prevents slipping
- 5 Spring-free auto latch design for one hand operation providing safety and convenience



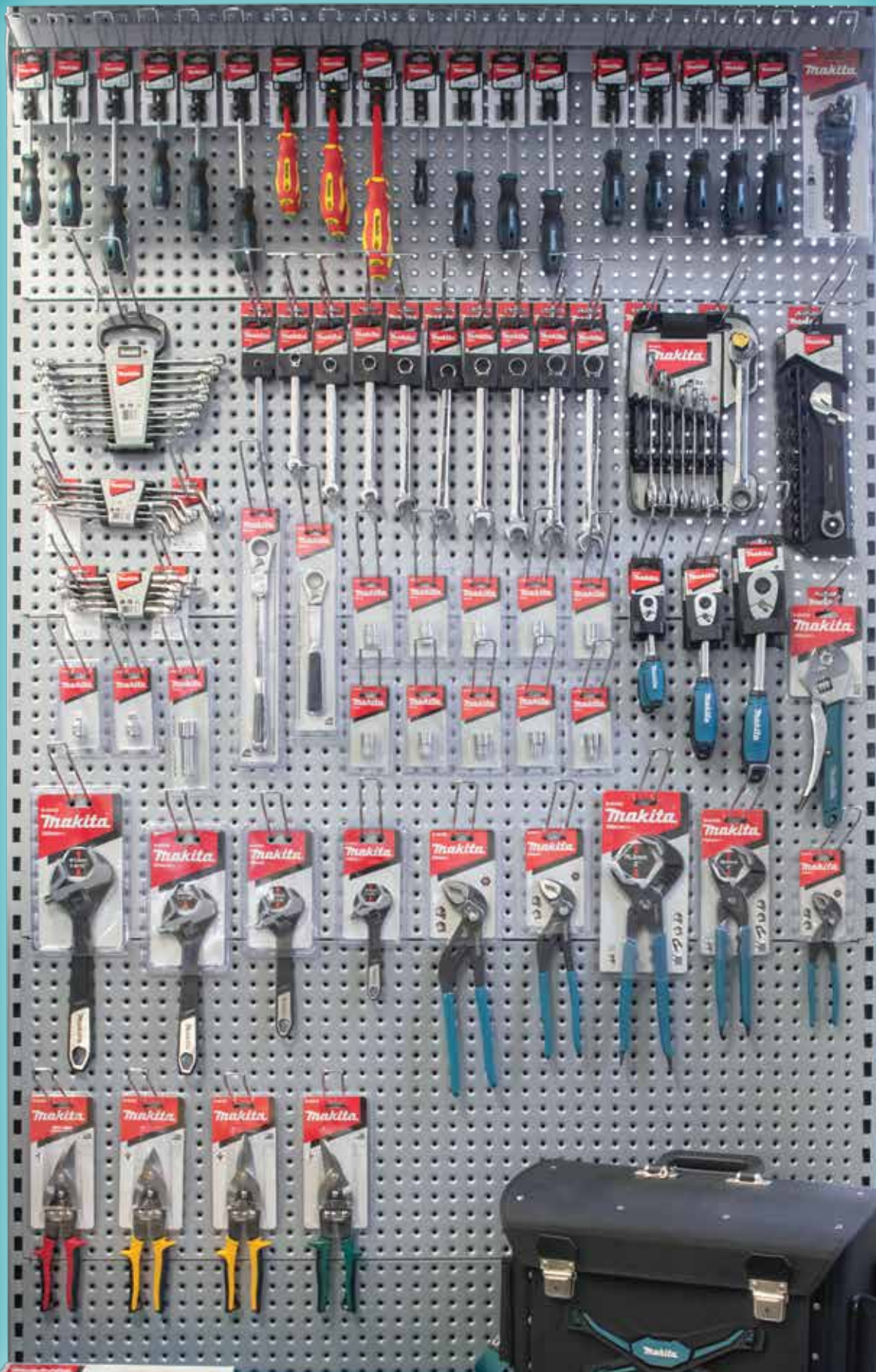
Part Number	Description	Package Dimensions L x W x D (mm)	Weight (kg)	Barcode
B-65800	LEFT CUT AVIATION SNIPS	310 x 107 x 26	0.42	0088381537742

Right Cut Aviation Snips

- 1 Chrome-Molybdenum Alloy steel forged blades for strength and durability
- 2 Centre fastener for high tensile strength and longer life
- 3 Non-slip dual material handle for comfort grip
- 4 Serrated edges for stable bite and prevents slipping
- 5 Spring-free auto latch design for one hand operation providing safety and convenience



Part Number	Description	Package Dimensions L x W x D (mm)	Weight (kg)	Barcode
B-65816	RIGHT CUT AVIATION SNIPS	310 x 107 x 26	0.42	0088381537759



Makita



Makita (Australia) Pty Ltd

ABN 57 001 117 335

Head Office and Central Warehouse

2 Litton Close, Pemulwuy NSW 2145

PO Box 215 Horsley Park NSW 2175

t: 1300 361 690

www.makita.com.au



MakitaAustralia